

*Face*

gdong pa

발음

얼굴

གདོང་པ།

[동바]

[dong pa]



*Tibetan*

티벳인

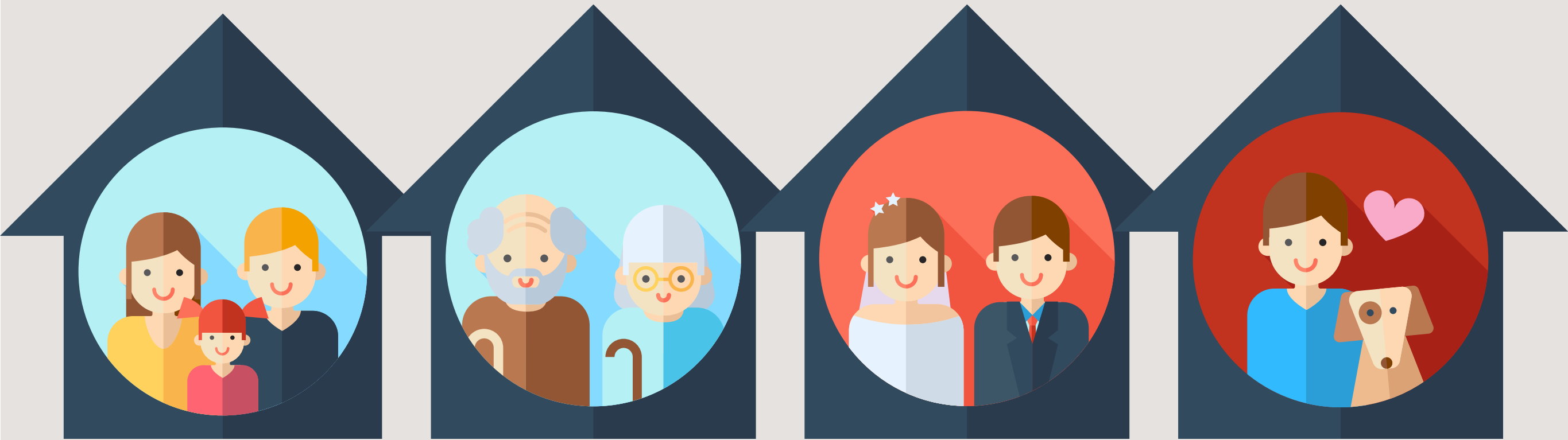
bod pa

བོད་པ།

발음

[뵘뵘]

[bö pa]



*Family*

가족

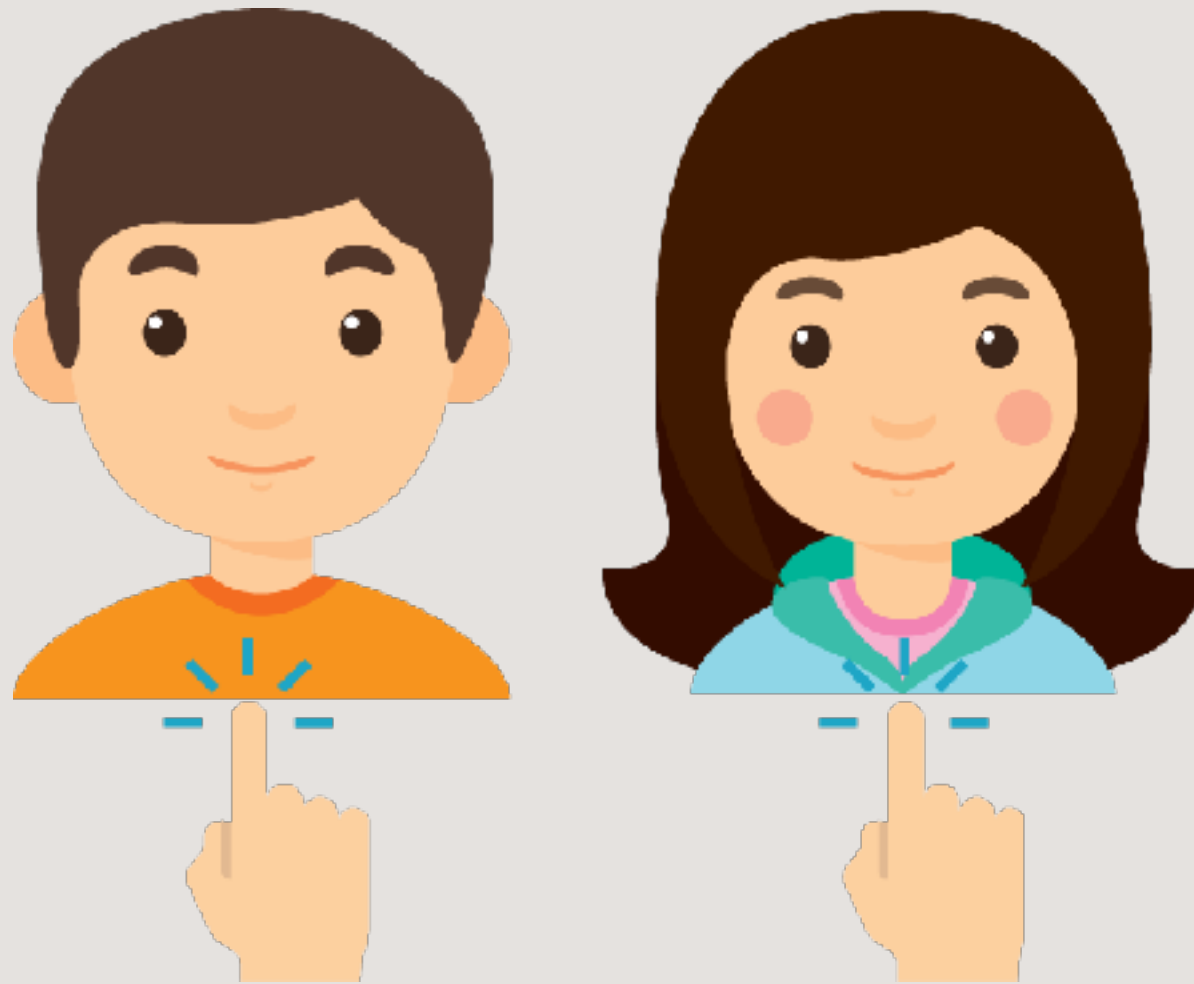
nang mi

ནང་མི།

발음

[낭미]

[nang mi]



*I, My*

nga | nga'i

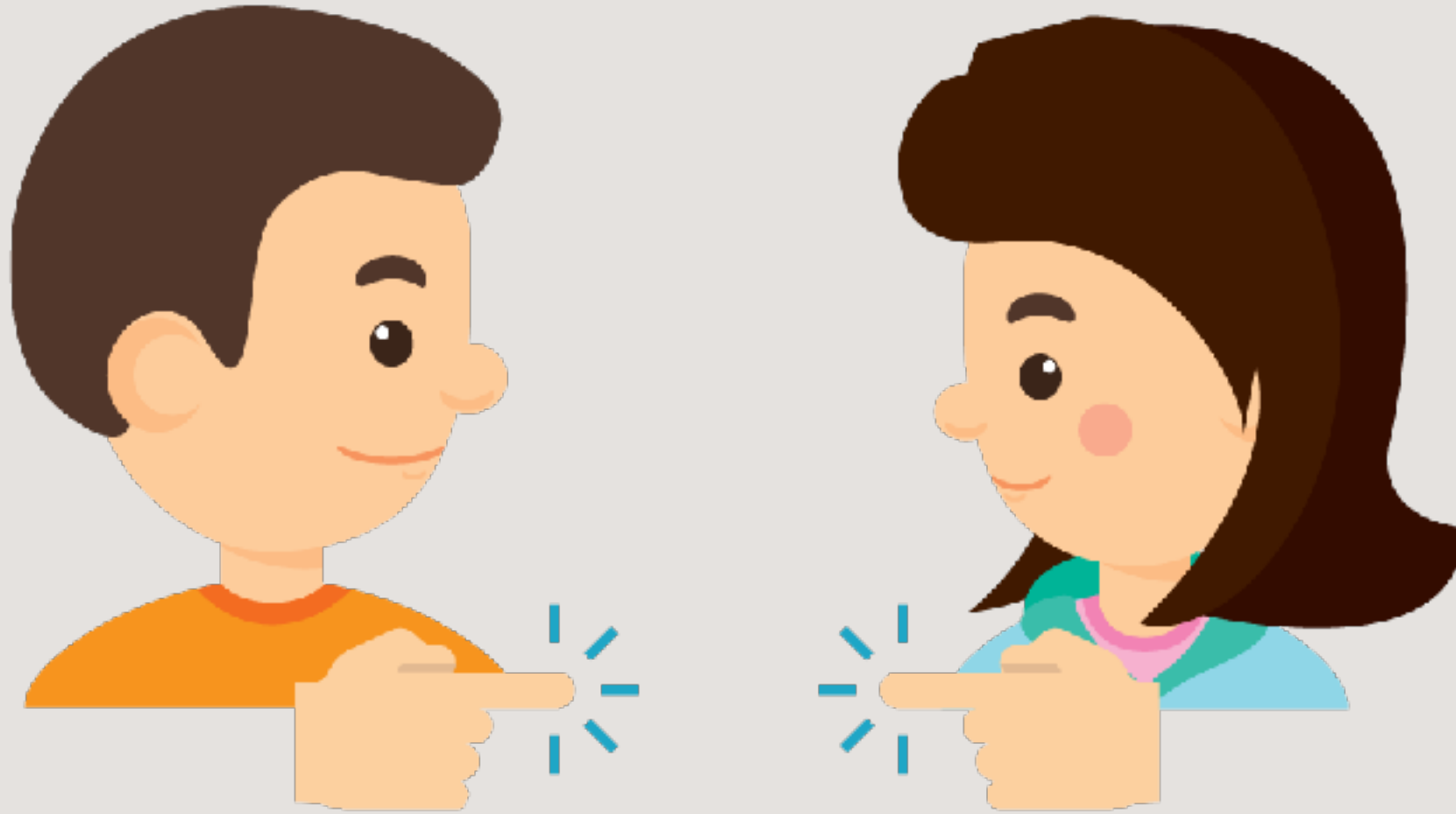
발음

나, 나의

ང་ ང་ཡི་

[(응)아] | [(응)예]

[nga] | [ngé]



*You*

khyed rang

발음

당신

ཐྱེད་རང་།

[케랑]

[khyé rang]

나란다불교학술원.티벳어 단어카드

INSTITUTE OF NALANDA BUDDHISM. Vocabulary Card

ཐྱེད་། : [비격식] [쾌] 너.

ཐྱེད་རང་། : [높임말. 격식] '너'에 대한 존칭. 당신





*Student*

slob phrug

발음

학생

སློབ་ཕྱོག

[롭톡]

[lop truk]



*Freedom*

rang dbang

받음

자유

རང་དབང་།

[랑왕(라왕)]

[rang wang]





*Water*

chu

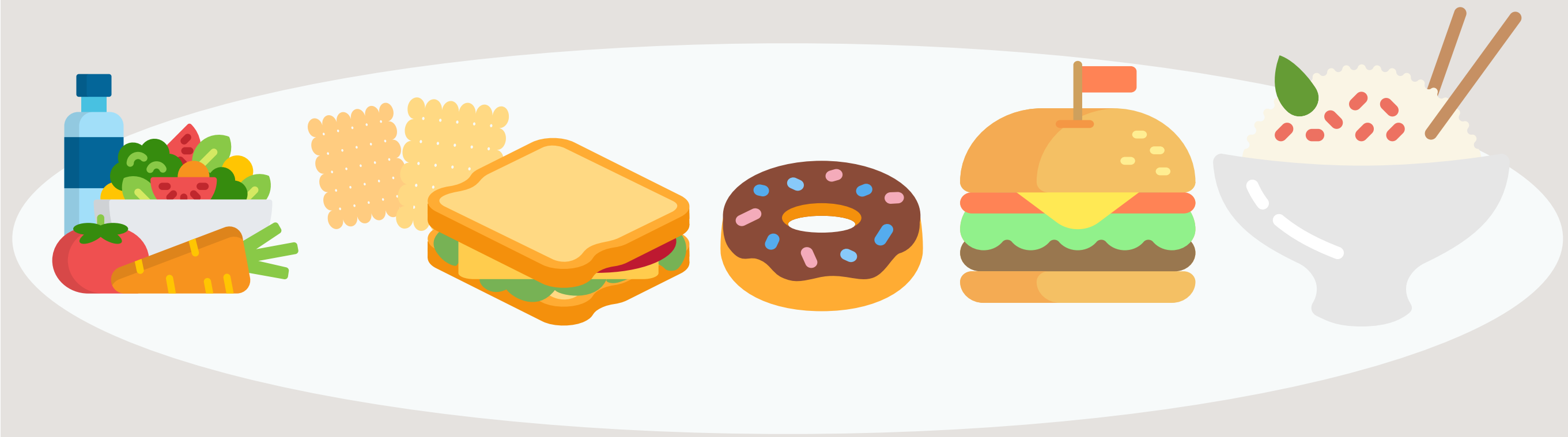
འཕུམ

འཕུམ

འཕུམ

[추]

[chu]



*Food*

kha lag

발음

음식

ཁ་ལག

[카락]

[kha lak]



*Buddha*

sangs rgyas

발음

붓다

སངས་རྒྱལ་

[쌍개]

[sang gyé]