

Face

gdong pa

발음

얼굴

གདོང་པ།

[동바]

[dong pa]



Tibetan

티벳인

bod pa

བོད་པ།

발음

[뵘뵘]

[bö pa]



Family

가족

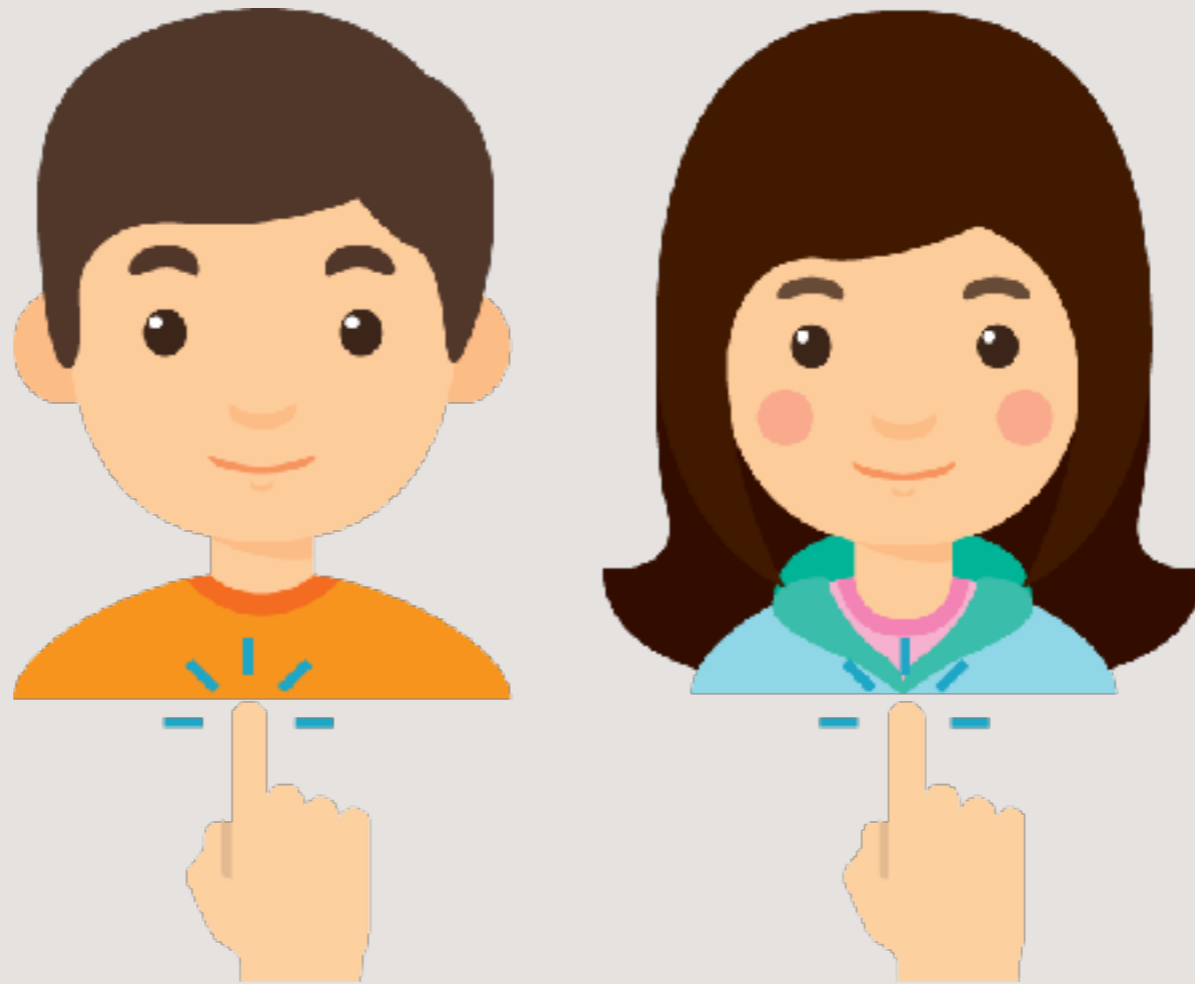
nang mi

ནང་མི།

발음

[낭미]

[nang mi]



I, My

nga | nga'i

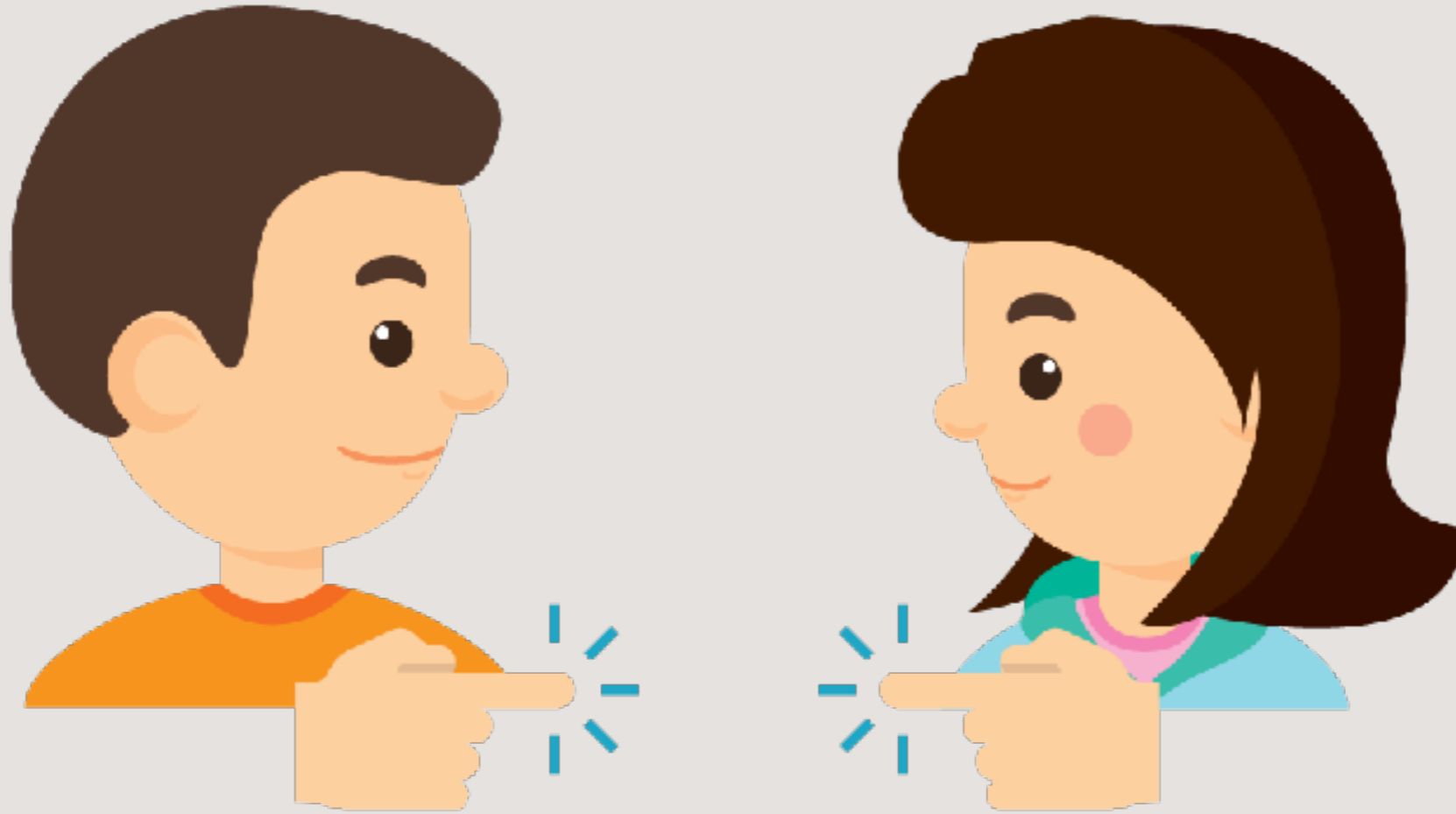
발음

나, 나의

ང་ ང་ཡི་

[(응)아] | [(응)예]

[nga] | [ngé]



You

khyed rang

발음

당신

ཐྱེད་རང་།

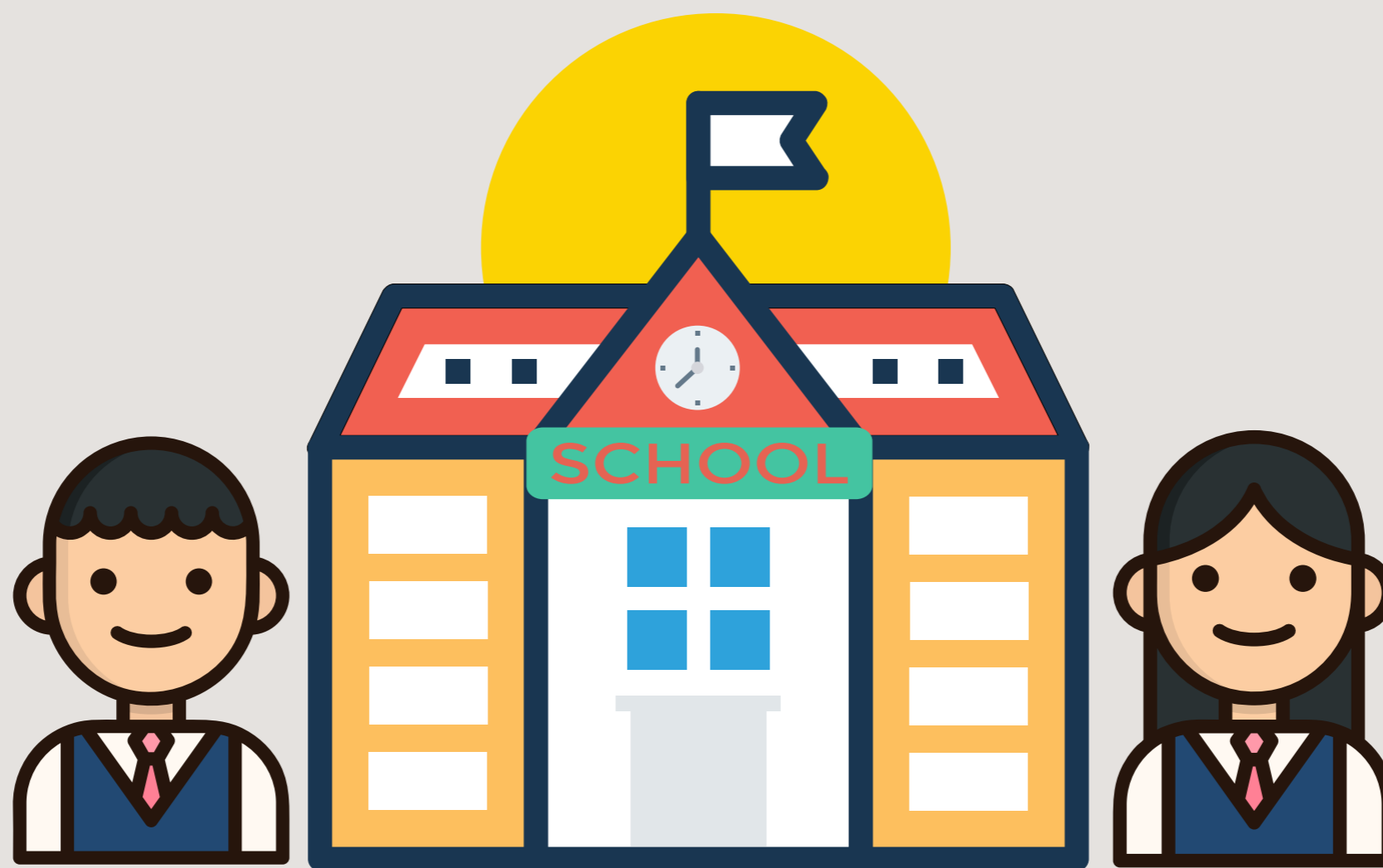
[케랑]

[khyé rang]

나란다불교학술원.티벳어 단어카드

INSTITUTE OF NALANDA BUDDHISM. Vocabulary Card

ཐྱེད་། : [비격식] [쾌] 너. ཐྱེད་རང་། : [높임말. 격식] '너'에 대한 존칭. 당신



School

slob grwa

발음

학교

ལྷོབ་གྲོ་

[롭다]

[lob dra]



Student

slob phrug

발음

학생

སློབ་ཕྱོགས་

[롭톡]

[lop truk]